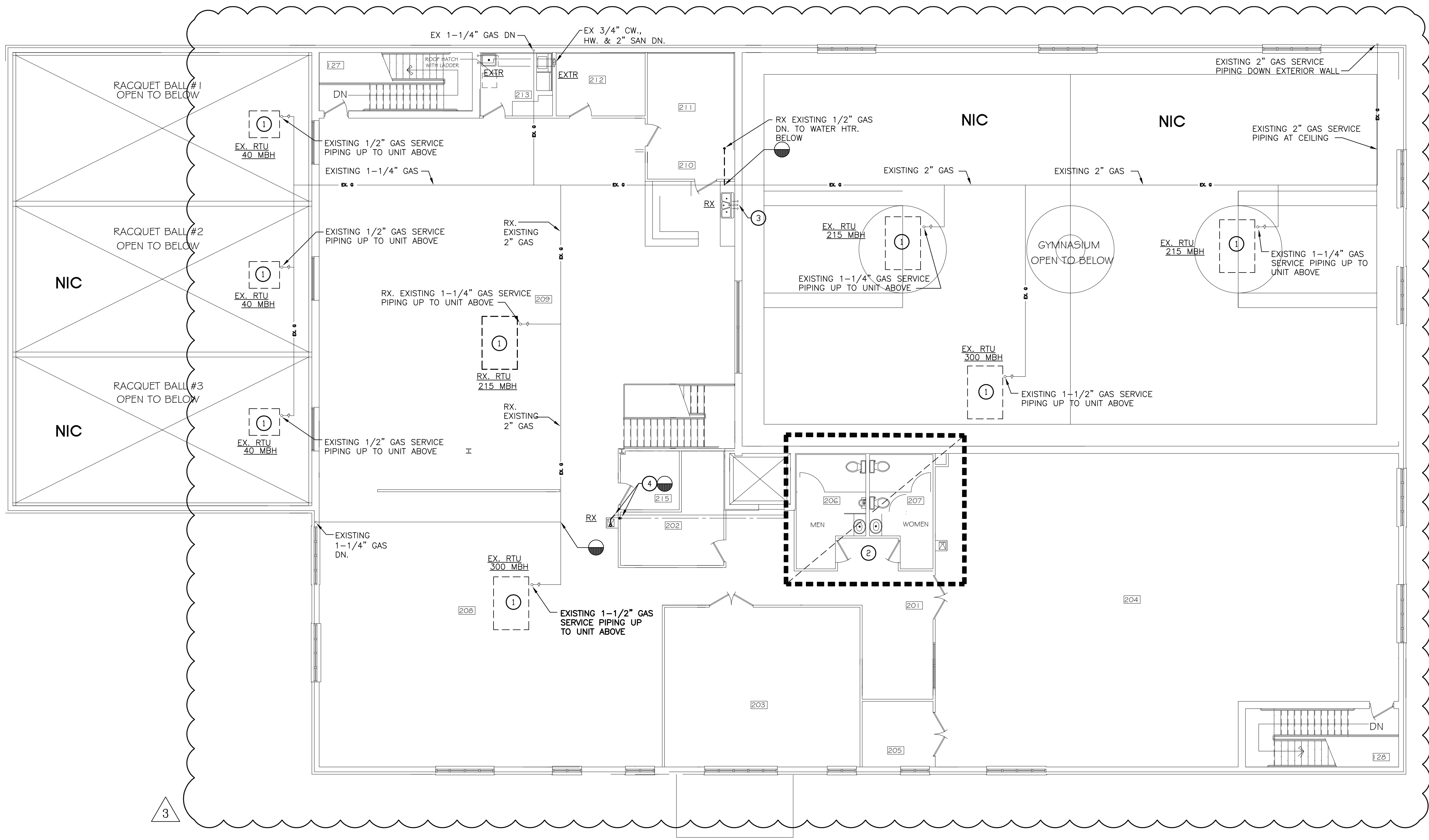


REVISIONS	
1	BID ITEMS 12/4/18
2	COORD. ITEMS 12/20/18
3	GAS CHANGES 1/4/19



- GENERAL NOTES:**
- A. REFER TO DATA SHEET FOR PLUMBING SYMBOLS AND ABBREVIATIONS.
 - B. REFER TO PLUMBING RISER DIAGRAMS FOR ADDITIONAL SIZING OF UTILITIES AND PIPING.
 - C. FOR PLUMBING FIXTURES AND EQUIPMENT, REFER TO PLUMBING SCHEDULE SHEET.
 - D. DOMESTIC WATER PIPING IS LOCATED ABOVE FINISHED CEILING, UNLESS NOTED OTHERWISE.
 - E. SANITARY PIPING IS LOCATED BELOW FINISHED FLOOR, UNLESS NOTED OTHERWISE.

- DRAWING NOTES:**
- 1 EXISTING AIR HANDLING UNIT ROOF TOP MOUNTED LOCATION.
 - 2 ALL PLUMBING FIXTURES, & FLOOR DRAINS LOCATED IN THE MEN'S AND WOMAN'S TOILET ROOMS ARE TO REMAIN.
 - 3 REMOVE EXISTING KITCHENETT SINK. EXISTING SANITARY PIPING VENT AND DOMESTIC WATER SERVICE PIPING TO REMAIN FOR RE-CONNECTION.
 - 4 REMOVE EXISTING WATER COLLER IN ITS ENTIRETY TO INCLUDE SANITARY, DOMESTIC WATER AND WALL SUPPORTS. CAP EXISTING SANITARY & DOMESTIC WATER PIPING.

SECOND FLOOR PLAN - PLUMBING DEMOLITION
SCALE: 1/8"=1'-0"

MODIFICATIONS TO WALDORF SENIOR &
 RECREATIONAL CENTER
 CHARLES COUNTY, MARYLAND
COPYRIGHT BY LITTEEN & ASSOCIATES, ARCHITECTS, LLC. NO PORTION OF THIS DRAWING MAY BE REPRODUCED, STORED OR TRANSMITTED BY ANY MEANS WITHOUT PRIOR WRITTEN PERMISSION FROM THE ARCHITECT.

R.L. LITTEN & ASSOCIATES, ARCHITECTS, LLC
 300 CHARLES STREET, SUITE 4
 P.O. BOX 1920, LAPLATA, MD 20646 (301) 934-1471

PROFESSIONAL CERTIFICATION
 I hereby certify that these documents were prepared or approved by me, and that I am a duly licensed professional engineer under the laws of the State of Maryland, License No. 16001, Expiration Date: 4/26/20

Johnson Consulting Engineers, Inc.
 130 W. 25th Street Baltimore, Maryland 21218
 Tel: (410) 235-0057, Fax: (410) 235-0946
 Email: info@jceengineers.net

DRAWN BY: SAM
 CHK'D BY: TAM
 PROJECT No. 2018

(PERMIT SET 7-26-18)

PD2