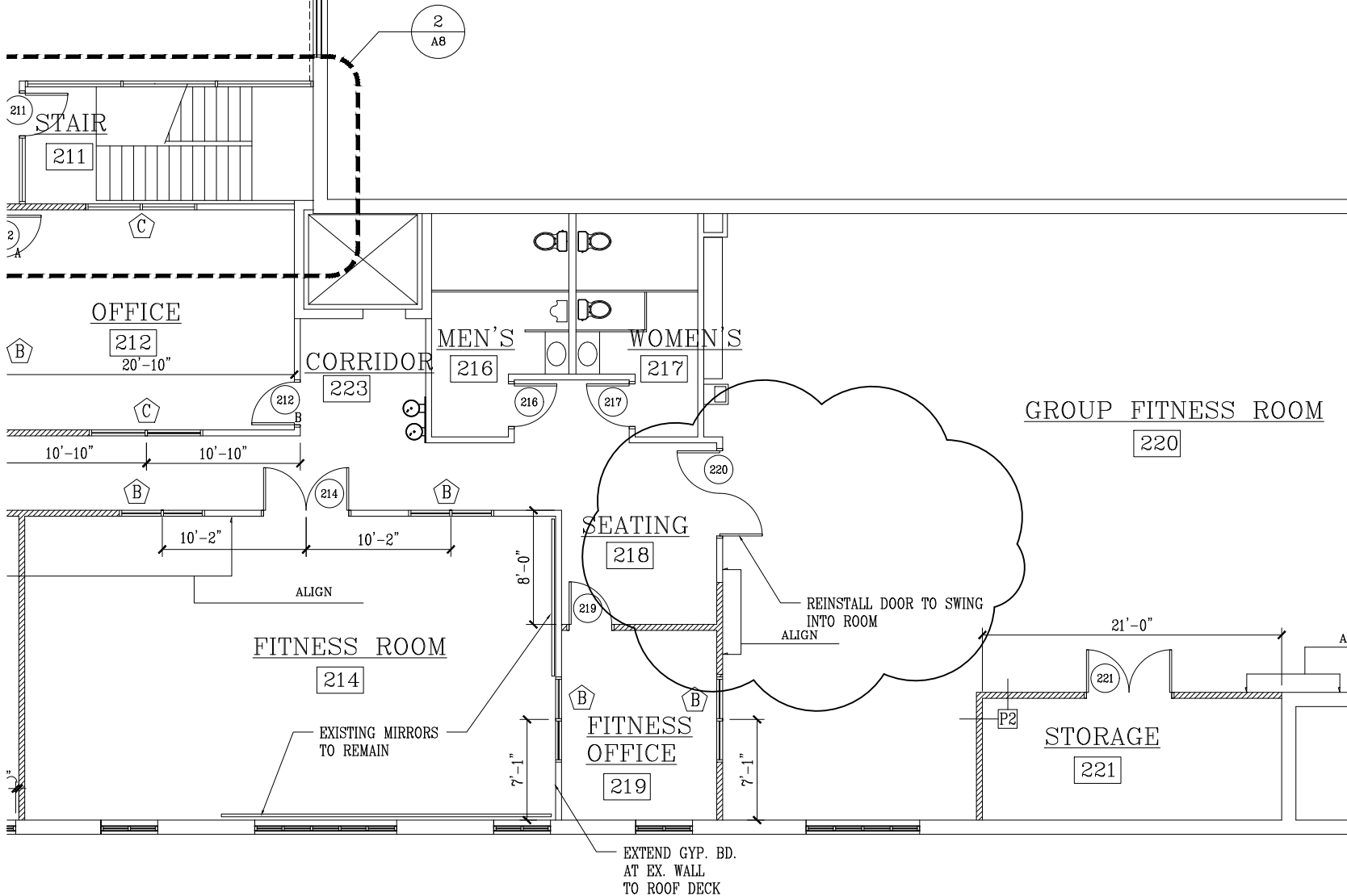


L SPACE  
206



1 COMPOSITE PLAN—SECOND FLOOR  
NTS

I CERTIFY THAT THESE DOCUMENTS WERE PREPARED OR APPROVED BY ME, AND THAT I AM A DULY LICENSED ARCHITECT UNDER THE LAWS OF THE STATE OF MARYLAND. LICENSE NUMBER 7959, EXPIRATION DATE DECEMBER 31, 2019

REVISIONS
10-1-18

R.L. LITTEN & ASSOCIATES, ARCHITECTS, LLC  
 300 CHARLES STREET, SUITE 4  
 P.O. BOX 1920, LAPLATA, MD 20646 (301) 934-1471  
 MODIFICATIONS TO WALDORF SENIOR &  
 RECREATIONAL CENTER  
 CHARLES COUNTY, MARYLAND  
CONSTRUCTION BY OTHER ARCHITECTS, LLC. IN VIOLATION OF THE ARCHITECTS ACT OF MARYLAND, PENALTY AS IMPOSED BY THE BOARD OF ARCHITECTS OF THE STATE OF MARYLAND.

R.L. LITTEN & ASSOCIATES, ARCHITECTS, LLC  
 300 CHARLES STREET, SUITE 4  
 P.O. BOX 1920, LAPLATA, MD 20646 (301) 934-1471

REVISIONS
10-1-18
17-32

A5.1