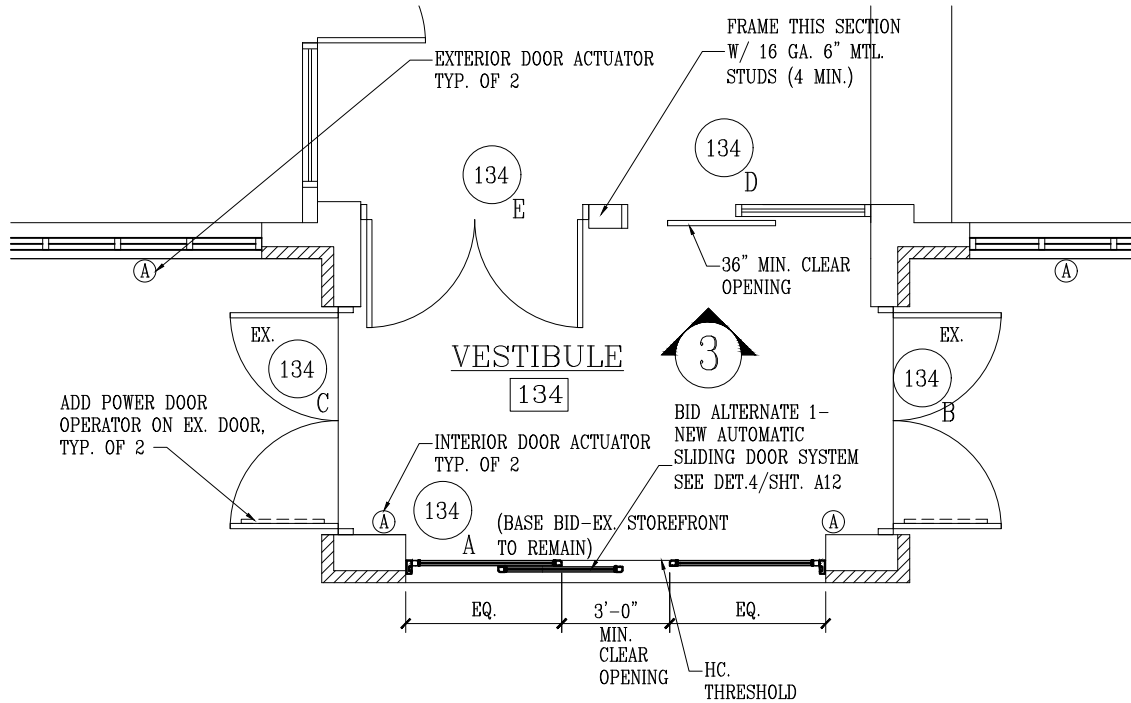


3 FRONT ELEVATION
NTS



2 PARTIAL PLAN-VESTIBULE
NTS

I CERTIFY THAT THESE DOCUMENTS WERE PREPARED OR APPROVED BY ME, AND THAT I AM A DULY LICENSED ARCHITECT UNDER THE LAWS OF THE STATE OF MARYLAND. LICENSE NUMBER 7959, EXPIRATION DATE DECEMBER 31, 2019

REVISIONS
10-1-18

MODIFICATIONS TO WALDORF SENIOR & RECREATIONAL CENTER
CHARLES COUNTY, MARYLAND

R.L. LITTEN & ASSOCIATES, ARCHITECTS, LLC
300 CHARLES STREET, SUITE 4
P.O. BOX 1920, LAPLATA, MD 20646 (301) 934-1471

RF
10-1-18
17-32

A6.1