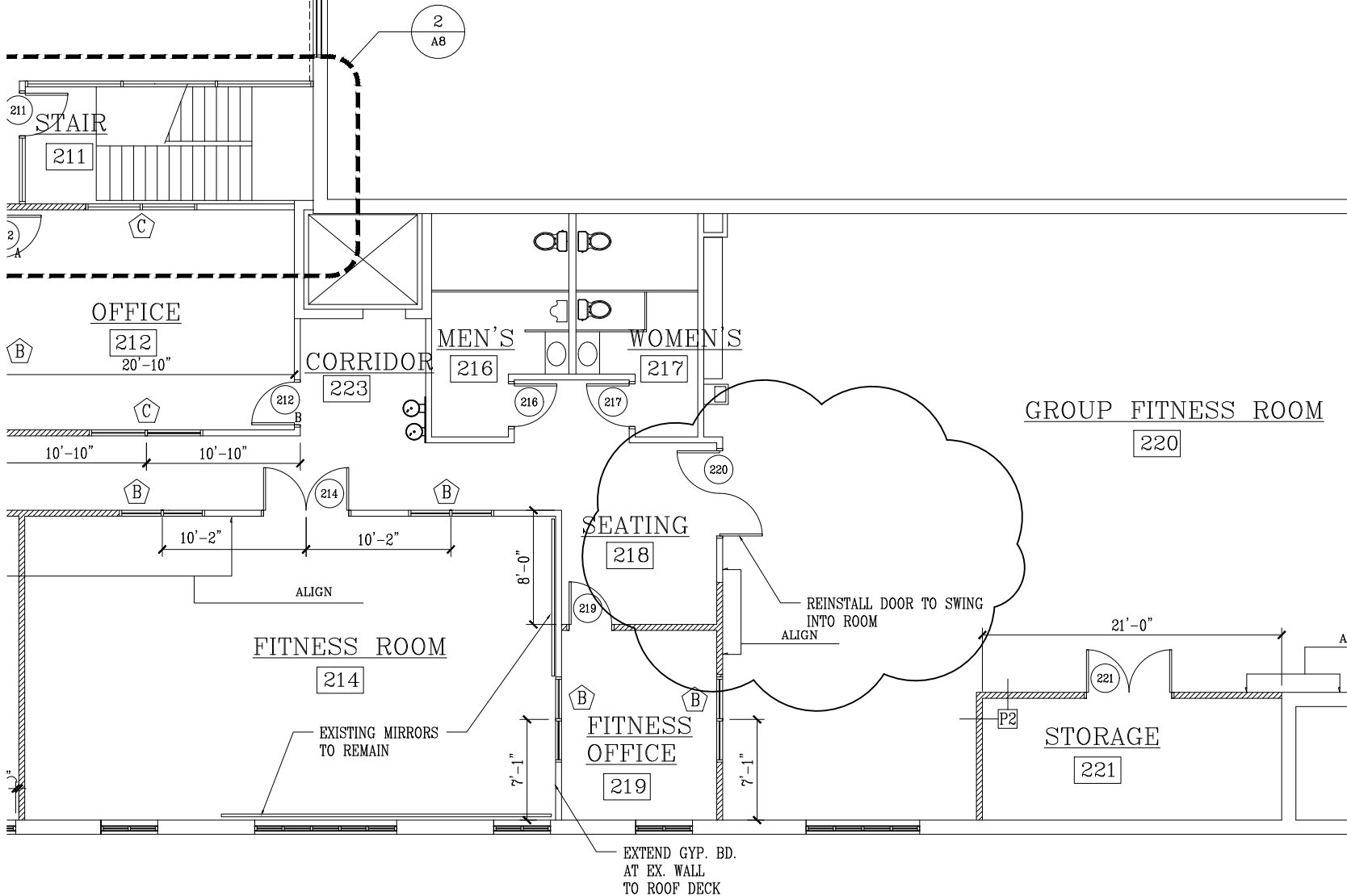


L SPACE
206



1 COMPOSITE PLAN—SECOND FLOOR
NTS

I CERTIFY THAT THESE DOCUMENTS WERE PREPARED OR APPROVED BY ME, AND THAT I AM A DULY LICENSED ARCHITECT UNDER THE LAWS OF THE STATE OF MARYLAND. LICENSE NUMBER 7959, EXPIRATION DATE DECEMBER 31, 2019

REVISIONS
10-1-18

R.L. LITTEN & ASSOCIATES, ARCHITECTS, LLC
 300 CHARLES STREET, SUITE 4
 P.O. BOX 1920, LAPLATA, MD 20646 (301) 934-1471
 MODIFICATIONS TO WALDORF SENIOR &
 RECREATIONAL CENTER
 CHARLES COUNTY, MARYLAND
CONSTRUCTION BY OTHER ARCHITECTS, LLC. IN VIOLATION OF THE ARCHITECTS ACT OF MARYLAND. EXPIRES ON 12/31/2019. SEE ARCHITECTS ACT OF MARYLAND.

R.L. LITTEN & ASSOCIATES, ARCHITECTS, LLC
 300 CHARLES STREET, SUITE 4
 P.O. BOX 1920, LAPLATA, MD 20646 (301) 934-1471

REVISIONS
10-1-18
17-32

A5.1